



New Listing

We are excited to present this stunning new property, with an asking price of £1,650,000.

Located in the sought-after area of Stanmore, this modern green oasis offers expansive living spaces, contemporary features, and a tranquil setting.

With ample outdoor space, private parking, and a host of exceptional amenities, this home provides the perfect blend of luxury and comfort.





The Neighborhood

Neighborhood Profile

Families and working individuals who are friendly and inviting

Average Age

45 - 70Yrs

Occupation Group

Managers, Directors and Senior Officials

Nearby Ammenities

- Local Shops and Supermarkets
- Schools
- Parks and Green Spaces
- Transport Links
- Restaurants and Cafes
- Medical Centres



Brockley Ave

Brockley Avenue is a peaceful and serene residential street, offering a tranquil setting.

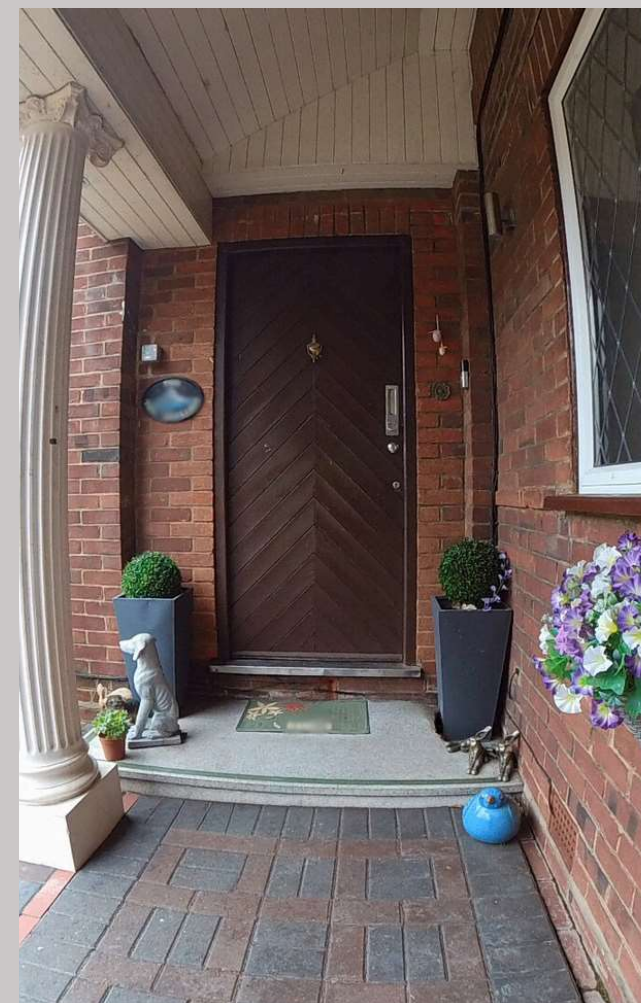
The property sits on the largest plot on the street, providing ample space and great potential for expansion.

Whether you're a growing family or seeking a quiet, private location among other Professionals, this home offers the perfect blend of privacy and community.



About the Property

- Chain Free
- Ample Off Street Parking
- Spacious Detached House
- 7 Bedrooms
- 4 Bathrooms 1 WC
- Open Plan
Kitchen/Dining/Living
- Spacious Home Office
- Games Room
- Side Annex with Kitchen,
Shower Room, Reception
and Bedroom



First Floor Sleeping Spaces

The first floor offers excellent sleeping accommodation with three generously sized double rooms, each filled with natural light.

The rear double room features an en suite with both a bath and a shower, yet still offers plenty of space.

The single room is also spacious and could easily be used as a double. It includes its own sink area, allowing the option to create an en suite or could be removed, depending on your preference.



Second Floor Sleeping Spaces

The converted loft extension features two double rooms, a single room, and a bathroom.

Both double rooms are equipped with sinks and shower areas, which could easily be transformed into en suites or removed to suit your preferences.

Storage is plentiful on this floor, with ample space built into the eaves, ensuring you won't run out of room.



Spacious Bathrooms

The property boasts spacious bathrooms throughout, ensuring comfort and convenience for all. The en-suite is particularly impressive, featuring both a bath and a shower unit, yet still offering plenty of space and ample natural light.

The family bathroom is equally generous, with both a bath and power shower unit, and remains airy and spacious. On the second floor, the bathroom is well-sized, complete with a shower unit, with the potential for a corner bath with a little planning.

Additionally, the ground floor includes a spacious WC, adding further convenience to the home.



Reception Areas

This property boasts a spacious open-plan living area, perfect for modern family living and entertaining. The seamless flow between the kitchen, dining, and lounge areas creates a bright and airy space. In addition, multiple reception rooms offer versatility, providing plenty of options for relaxation, a home office, or a formal dining area. Whether for casual gatherings or more formal occasions, these flexible spaces cater to all needs.

For those who cherish quiet time, this home offers a separate, cosy front reception area, perfect for relaxation or unwinding with a good book. This private space provides a peaceful retreat, away from the main living areas, offering a tranquil setting to enjoy some solitude or intimate conversation.





Kitchen Haven

A large home deserves a spacious open-plan kitchen, complete with all the modern touches. From a large stove burner perfect for cooking family meals or entertaining, to ample worktops that provide plenty of space for meal preparation, this kitchen is designed for both functionality and style.

The open space available is excellent, creating a bright and airy atmosphere that enhances the kitchen's appeal. Storage is in abundance, ensuring everything has its place and keeping the space tidy and organised.

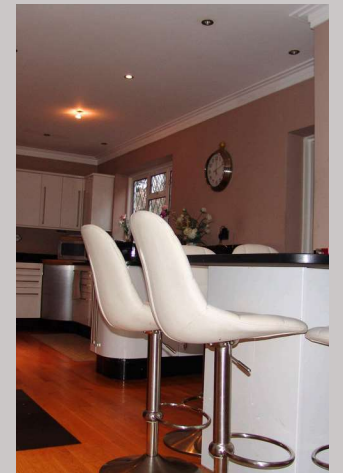
Off the kitchen, a door discreetly leads to a separate utility room and then to the games room, adding convenience and extra space for all your needs. Additionally, just off the kitchen is a very spacious home office, where you can quietly work away in peace with the shut of a door.

This kitchen is truly the heart of the home, ideal for those who love to cook, entertain, and work in comfort.



Care to Dine?

This home offers ample dining areas to suit all types of dining occasions, from formal gatherings to intimate meals. Whether hosting a large dinner party or enjoying a quiet meal with family, there is a space for every need. On busy days, the convenient breakfast bar provides a casual spot for quick meals or coffee, adding to the home's versatility.





Annex

The property also features a separate annex with its own private entrance. This self-contained space includes a kitchen/dining area, reception room, wet room, and stairs leading to a bedroom and dressing area. The annex offers great potential, as it can easily be incorporated into the main house, with the separation doors still in place for flexible use. Alternatively, it could be transformed into a separate home office area or additional living space. The possibilities are endless, making this annex a valuable addition to the property.



Entertaining

This home is designed with entertaining in mind, offering a large 4,000 square foot garden perfect for outdoor gatherings and events.

Inside, the open-plan living, dining, and kitchen areas create a spacious flow, ideal for hosting guests in style.

Additionally, a dedicated games room provides a fun and relaxed space for entertainment. With these fantastic features, this property is perfect for those who love to entertain and create memorable experiences with friends and family.

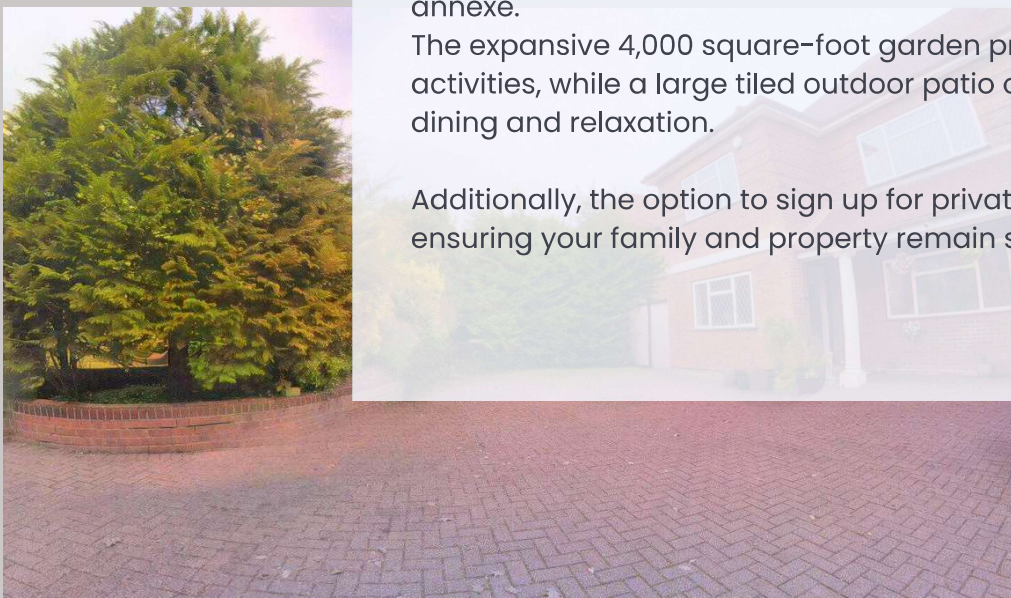


Outdoors

There will be no shortage of space with this property, featuring private off-street parking for 6 cars or more, as well as a separate entrance to a side annexe.

The expansive 4,000 square-foot garden provides plenty of room for outdoor activities, while a large tiled outdoor patio offers the perfect space for al fresco dining and relaxation.

Additionally, the option to sign up for private street security is available, ensuring your family and property remain safe and secure.



Make Yourself at Home

This is a once-in-a-lifetime find for the right family. With everything you need indoors and outdoors to create a private oasis in the city, this home won't stay on the market for long.

Get in touch with us to arrange a viewing today by calling 0330 113 5535 or emailing info@eliteintlrealestate.com



Elite Intl
Real Estate

